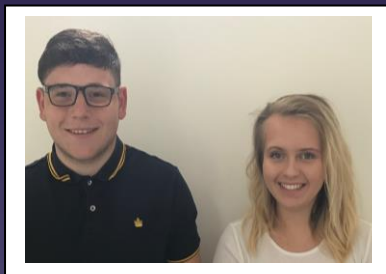


King Charles I School

Sixth Form Standards



Sixth Form Team

Mrs Delahaye – Deputy
headteacher

Miss Blackburn - Head
of Sixth Form

Ms Finney – Assistant Head
of Sixth Form

Mrs Thomas – UCAS and
next step co-ordinator

Mr Beasley – Sixth Form
Achievement Leader

"Setting the Standard"

King Charles I School Sixth Form seeks to be a place where you can develop towards your full potential... intellectually, spiritually, socially and personally.

You will strive to maintain a high quality of academic standards.

All members of the Sixth Form will be helped to take responsibility for their own lives and learning in an environment which sets the standard for success.

Learning is regarded as an active, sharing process. You are expected to question, contribute, challenge and to be challenged.

"We are what we repeatedly do. Excellence, then, is not an act, but a habit." *Aristotle*

Bev Blackburn
Head of Sixth Form

King Charles I School

Sixth Form Standards

Academic Standards

What we expect from you

You are required to complete all subject reading material by 9am on Thursday 7th September if you are joining Year 12.

You will attend regular learning conversations with your form tutor.

You will meet all deadlines for homework and coursework. Standards are necessarily higher in the Sixth Form.

You are expected to work in the study room when you have a study period, collecting an additional five hours of work for every subject studied from your teachers.

What you can expect from us

We will provide high quality teaching in all your subjects.

We will set you targets for all subjects that will enable you to succeed and access higher education or employment once you leave King Charles I School.

We will set regular homework to help extend your learning.

We will provide you with constructive feedback on your work.

We will conduct regular testing to assess your progress.

We will provide you with 3 reports per year; which includes a full written report.

We will provide you with high quality Career Education, Information Advice and Guidance, regarding your future choices.

We will ensure you have access to work experience aimed specifically at your future pathway choices.

We will provide you with access to an enrichment programme to support your academic studies.

We will provide you with a textbook for all your courses where appropriate.

We will be available to meet you and your parents/carers to discuss academic progress during parents' evening on Thursday 8th December.

King Charles I School

Sixth Form Standards



Attendance and Punctuality

You should aim to achieve 100% attendance and be on time for school every day.

Sixth Form follows the whole school attendance policy. Absence must be reported to Mr Beasley on 01562 512880.

Year 12 students are expected to be in school by 8:40am each morning and will depart at the end of the normal school hours.

Any student who has not gained a registration mark will receive a telephone call from Mr Beasley between 9.30am and 10.00am

Year 13 students are able to take a maximum of four home study periods per week if you are on course to meet your targets in all your subjects. Year 12 will be able to do the same from November

On site standards

At all times you are a King Charles I School student. You are expected to be a role model, within the classroom and out.

Off site standards

At all times you are a King Charles I School student.

Sixth form students at King Charles I School are allowed the privilege of representing the school off site at lunch times. If you are under 18 we must have parental permission for you to be off site.

No "fast food" to be brought onto the site.

When undertaking work experience, you will still be representing King Charles I School and the same expectations on standards of attendance, punctuality and behaviour are expected.

King Charles I School

Sixth Form Standards

Ethos - standards for success

We believe in success: As a King Charles I School student you will have designated study periods on your timetable, in which to complete your studies or participate in enrichment activities.

You will have the opportunity to participate in the Enrichment Programme as well as many other exciting opportunities.

Some students will be able to complete the highly regarded Extended Project Qualification.

Sixth Form Centre Standards and Support

All students have access to our modernised Sixth Form centre with access to high quality resources, equipment and a full time achievement leader.

You will have access to our Sixth Form common room which you will be able to use as a less formal working environment.



Use of mobile phones and other electronic equipment

You will follow the whole school policy whilst outside the Sixth Form centre.

Mobile phones can be used inside the centre but not to the distraction of others.

No headphones to be used outside the Sixth Form centre.

King Charles I School

Sixth Form Standards

Dress standards

Males: Jacket, smart tailored cardigan or smart jumper. Trousers-smart black jeans are acceptable. Shirt-long or short sleeves with a collar (no large motifs). Polo shirts are acceptable. Coloured or patterned T-shirts are not to be worn under shirts. Long sleeved shirts should be tucked in at all times. Shoes (leather or leather looking).

Females: Jacket, smart tailored cardigan or smart jumper. Skirt (knee length). Trousers-smart black jeans are acceptable. Smart dress. Shirt/blouse with a collar (no large motifs). Coloured or patterned T-shirts are not to be worn under shirts. Shirts/blouses should be tucked in at all times. Shoes (leather or leather looking).

Students studying PE, BTEC sport or dance must attend school following the dress code and then change into their kit for practical subjects only.

The following items of clothing are not allowed: hats, trainers, canvas shoes, high heels, flip-flops, short skirts, shorts, thin strapped tops, sun dresses, leggings, jeggings, any type of jeans except for smart black ones, tracksuit bottoms, sweatshirts, hoodies, denim shirts and military clothing (except for CCF activities).

Please note that:

- students with pierced ears may wear small plain gold or silver stud earrings, which must not be 'jewel style' earrings. There should only be one earring in each lobe. No other piercing is allowed.
- hairstyles should be in keeping with a formal place of work. Therefore, no extreme hair styles or colours are permissible-eg dip dyeing, extreme bleaching, patterns shaved into the hairstyle or eyebrows are not permitted.

Students in the sixth form who attend school wearing the incorrect dress will be sent home to change.



King Charles I School

Sixth Form Standards

Post King Charles I School support - Preparation for life

You will have one to one advice from our UCAS Advisor to support your application.

If you are not thinking of attending university we have an independent careers advisor available to you.

We will provide advice on student finance for university.

You will be able to attend a Higher Education Convention in March and a Higher Education Evening in June of Year 12.

We will provide visits to University campuses to enable you to experience life as University undergraduate.

Support to meet the standards

If you are unable to meet the standards expected, you will have a parental meeting to review course continuations.

If you are unable to meet the attendance standards you will have a parental meeting. Falling below progress to target may result in directed sixth form academic support.

Support provided to meet the standards

Work completion support for deadlines within monitored study sessions.

Academic support after school by departments.

Academic enrichment programme to support your learning.

Academic mentoring with form tutors and the Sixth Form achievement leader.

Punctuality and attendance = grades

